

MA24106A

USB Power Sensor

Quick Start Guide



Anritsu

Anritsu Company
490 Jarvis Drive
Morgan Hill, CA 95037-2809
USA

P/N: 10585-00015
Revision: B
Printed: October 2007
Copyright 2007 Anritsu Company

Introduction

This guide provides installation instructions for the MA24106A USB power sensor. It contains the following:

- Hardware and Software Requirements for the installation and operation of the sensor
- Driver Installation procedure for properly installing the driver for the sensor

Hardware and Software Requirements

Please make sure that the following minimum requirements are met to control the power sensor via a personal computer:

- Intel® Pentium® III or equivalent processor
- Microsoft® Windows Vista® (32-bit only), Windows XP or Windows 2000
- 512 MB of RAM
- 100 MB of available hard-disk space
- 1024 × 768 display resolution
- PC or laptop with a USB port and CD-ROM drive

Driver Installation

The driver must be installed before the MA24106A power sensor can be used. Follow the steps below as a guide for proper installation:

-
1. Insert the installation CD in the drive of your computer. If the installation menu does not start automatically, open the file named **Startup.htm** located on the CD.
-

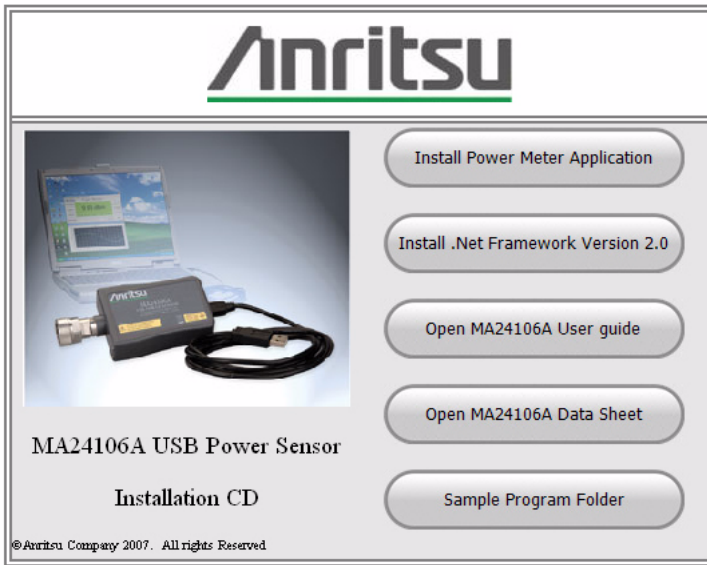


Figure 1. Anritsu Power Meter Installation Menu

Note: If required, please install the .Net Framework, version 2.0.

2. Click **Install Power Meter Application** and select **Run** to start the installation.
-

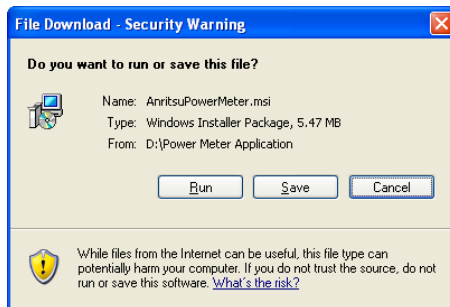


Figure 2. File Download - Security Warning

-
3. Click **Next** in the following screen to begin the installation process.
-

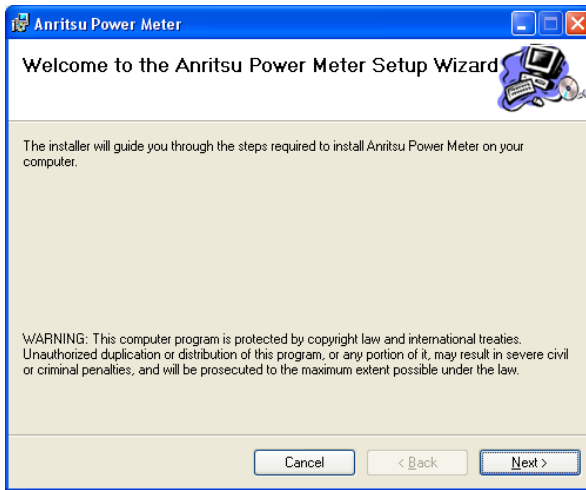


Figure 3. Anritsu Power Meter Installation

4. Browse for the installation folder and select the desired permissions, and then click **Next**.

The default installation directory is:

C:\Program Files\Anritsu\AnritsuPowerMeter

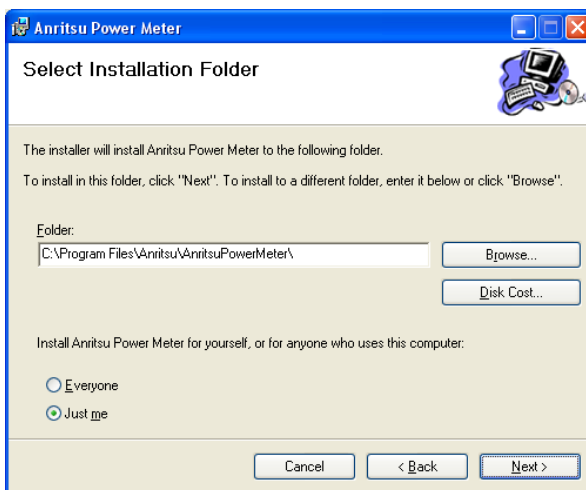


Figure 4. Anritsu Power Meter Installation

5. Select **I Agree** to the license agreement, and then click **Next**.

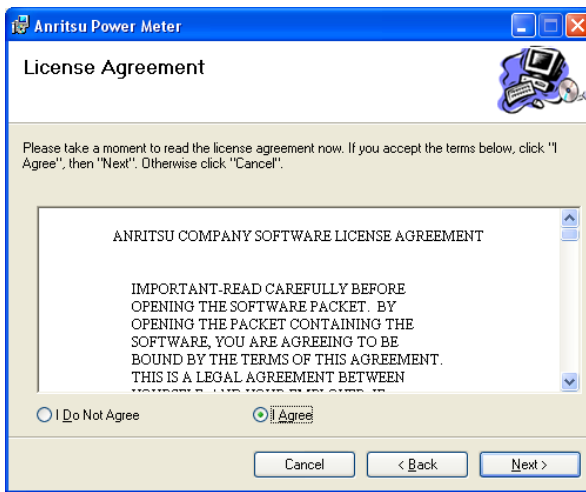


Figure 5. License Agreement

6. Select **Next** to continue with the software installation.

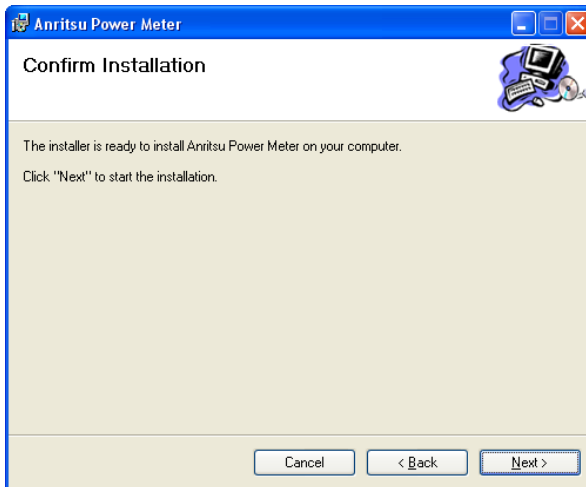


Figure 6. Confirm Installation

The software will then install to the selected location.

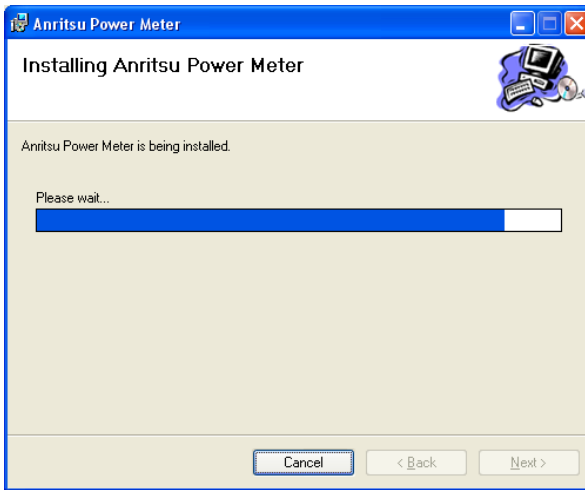


Figure 7. Installing the Anritsu Power Meter Application

7. When the installation completes, click **Close**.

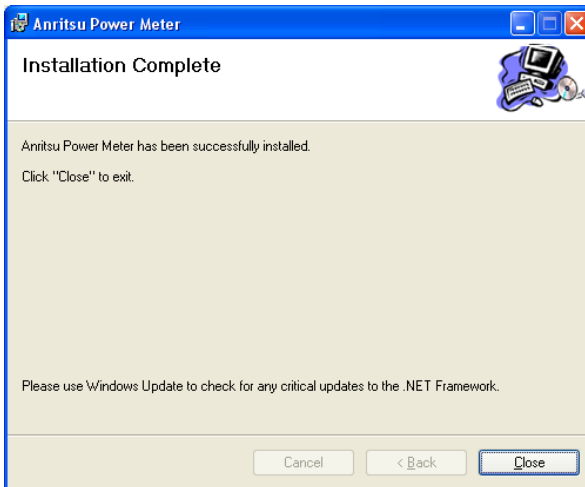


Figure 8. Application Installation Complete

8. Connect the MA24106A power sensor to the USB port of the PC with the supplied USB cable. The status LED will light green indicating that the sensor is turned ON.

-
9. When the Found New Hardware Wizard installation screen appears, select **No, not this time** to search for software, and then click **Next**.
-



Figure 9. Found New Hardware Wizard

10. Select **Install from a list or specific location (Advanced)**, and then Click **Next**.
-

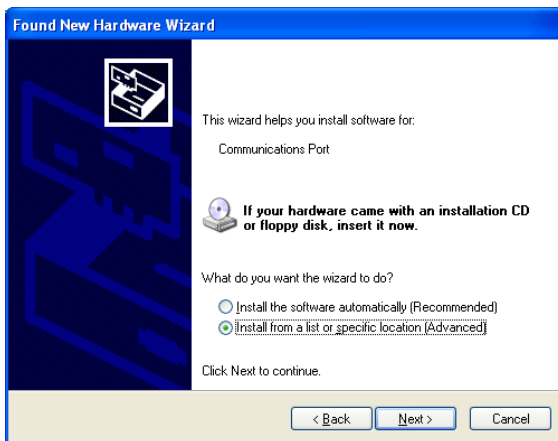


Figure 10. Found New Hardware Wizard

11. Select **Don't search. I will choose the driver to install**, and then click **Next**.

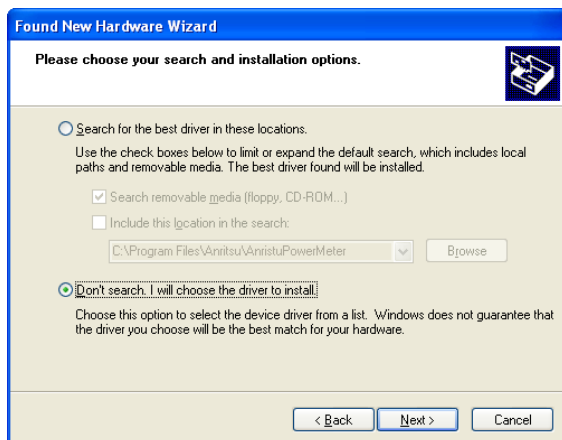


Figure 11. Found New Hardware Wizard

12. Select the hardware type **Computer**, and then click **Next**.



Figure 12. Found New Hardware Wizard

13. Click **Have Disk...**, and then click **Next**.

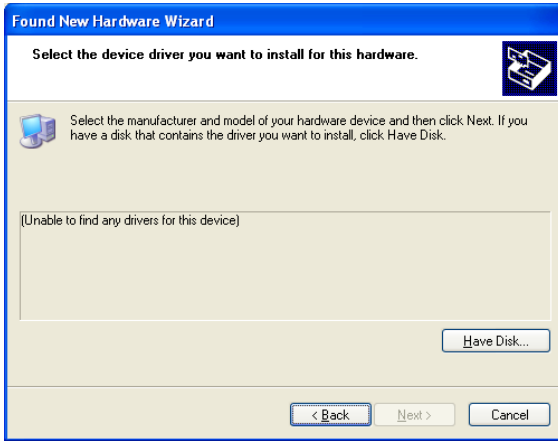


Figure 13. Found New Hardware Wizard

14. Browse to the location on your hard drive where you installed the program. If the default settings were chosen during the application installation, click **Browse...**, as shown below, and then select:

C:\Program Files\Anritsu\AnritsuPowerMeter\AnritsuMA24106A.inf

15. Click **OK**.

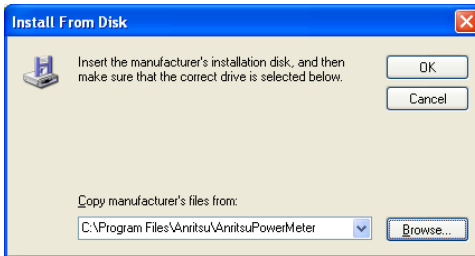


Figure 14. Install From Disk

16. Select **Anritsu MA24106A** from the list, and then click **Next** as shown below.



Figure 15. Found New Hardware Wizard

17. The Hardware Installation warning may appear as shown in Figure 16. Click **Continue Anyway**.



Figure 16. Hardware Installation

18. Click **Finish** to close the wizard.

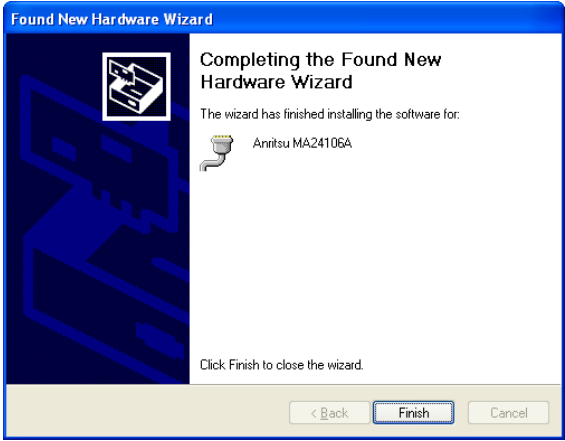


Figure 17. Found New Hardware Wizard

The MA24106A is now ready for use.

19. Launch the Anritsu Power Meter application from the new desktop icon or from the **Start | Programs** menu.

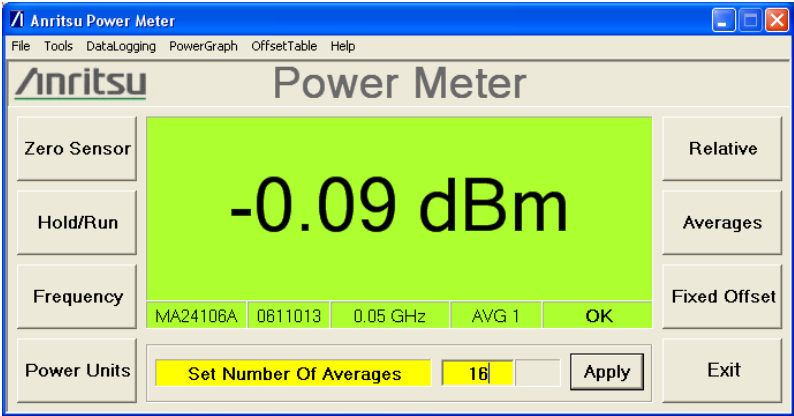


Figure 18. Anritsu Power Meter Application

20. Refer to the MA24106A User Guide or Online Help for information about using the Anritsu Power Meter application.

