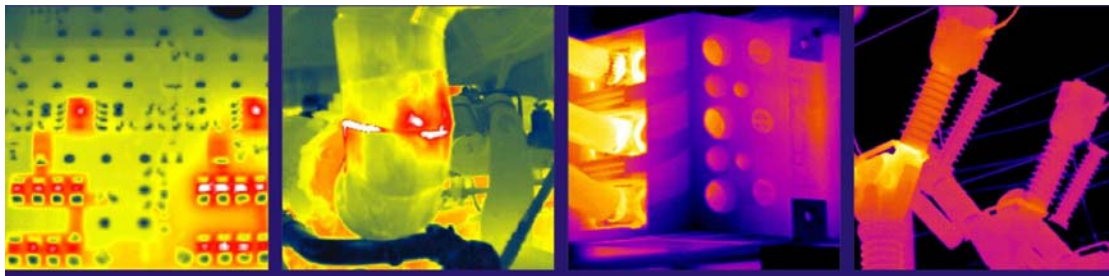




Thermal Imaging Camera KTI6

KTI6 is an affordable, high performance and easy-to-use infrared thermal camera. With the new generation of focal plane detector, KTI6 infrared camera produces crisp thermal image, accurate temperature measurement, and increase system maintenance quality and efficiency in the following industries: Electrical Power Systems, Industrial Manufacture, Science Research, Fire Prevention, Oil Industry, Transportation, Civil Building, Medical Application, and Security Application.



Product Features

- New generation high performance IR detector 160x120 pixels 25 μ m.: Improve image quality and increase thermal sensitivity
- Crisp thermal images: Users can locate the scene easier and rapidly with integrated images.
- Accurate temperature measurement: Help to detect and address problems quickly and clearly.
- Bright 3.5 Color LCD: Produce sharper and clearer image
- Unique Button Design: Unique one-click design for easier operation
- 50Hz Real-time Imaging: Smooth and crisp thermal images
- 40sec Voice Annotation: Allow users take quick notes on every image taken
- Auto-detecting Hot/Cool Spot, voice and color Alarm: Improve system maintenance efficiency
- Customized functions: optional lenses and temperature range



Technical Specifications

Detector Data	
Detector type	Focal plane array(FPA), uncooled Microbolometer
IR resolution	160 x 120 pixels
Pixel pitch	25µm
Spectral range	8-14µm
Imaging and Optical Data	
Field of view (FOV)	1、18°×13.5°/0.15m 2、12°×9°/0.2m 3、6°×4.5°/0.8m 4、45°×33.75°/0.15m
Spatial resolution (IFOV)	1.4mrad (18°×13.5°)
Thermal sensitivity	100mk at 30°C
Image frequency	50/60Hz
Focus	Manual
Electronic zoom	2x
Image Presentation	
Display	3.5" color LCD
Measurement	
Temperature range	A、-20°C ~+120°C B、-20°C ~+600°C C、-20°C ~+2000°C
Accuracy	±2°C or ±2% of reading
Measurement spot	Up to 4 moveable spots
Measurement area	Up to 3 moveable areas, automatically capture maximum temperature
Line profile	Random line profile
Isotherms analysis	Yes
High temperature alarm	Voice, color
Emissivity correction	Adjustable from 0.01 to 1.0
Temperature correction	Auto
Image Storage	
Storage card	Build-in flash card, up to 2000 images
File formats	Standard JPEG, 14 – bit measurement data included
Voice comments	40s voice record digital voice, stored with per image via built-in microphone.
Laser Indication	
Classification type	Class 2, 1mW/635nm Red
Power System	
Battery type	Rechargeable and replaceable Li-ion battery
Battery operating time	Approx 3 hours
Power saving	User defined
Power operation	7-9V DC
Environment Data	

Operating temperature range	-20°C - +50°C
Storage temperature range	-40°C - +70°C
Humidity(operating and storage)	≅ 90% non-condensing
IP rating	IP54 IEC529
Shock test	25G IEC68-2-29
Vibration	2G IEC68-2-26
Physical Data	
Size, L x W x H	330mm × 95mm × 86mm
Weight	650g
Tripod mounting	1/4 " -20
Interfaces	
External DC input	Yes
Audio output	Yes
Video output	PAL / NTSC
PC	USB
Camera Incudes	
Standard	Infrared thermal imaging with 18° standard lens, 2 Li-ion batteries, charger, adapter, Video cable, USB cable, Software CD, instruction, professional tool box
Optional accessories	12V car adapter, tripod, Li-ion battery.



K&M Instruments Limited

Email : ian@kmndt.com , hlzhang@kappametals.com

Website : www.kmndt.com