



testo 945

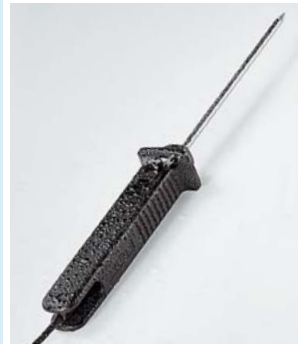
Quick and highly accurate temperature measurement with alarm

► Measures ► Saves ► Print ► PC analysis



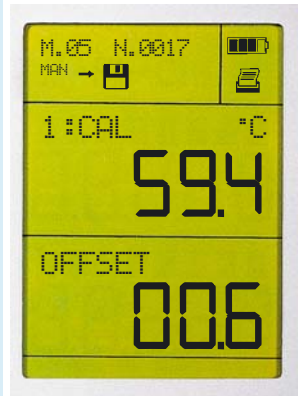


Quick and highly accurate temperature measurement with alarm



Wide range of probes for tough industrial applications

- robust
- water-proof
- with patented bending protection



System adjustment

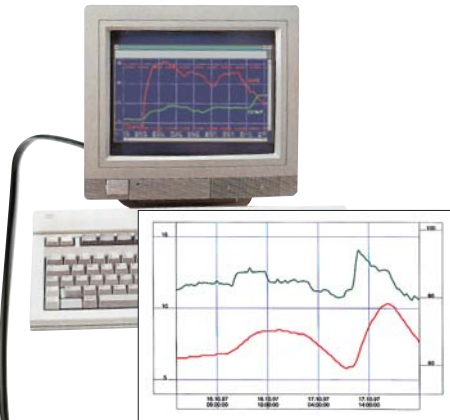
The **testo 945** measuring instrument and probes can be adjusted to the "zero error adjustment point" during system adjustment. Offset is simply entered in the instrument at the touch of a button. A Testo calibration certificate or a highly accurate Pt100 probe serves as a reference for offset calculations.



Protection for your instrument

The **TopSafe** protects your instrument from impact, dust and water. Ideal for industrial applications.

Convenient data analysis using Testo ComSoft 3



Integrated RS232 interface (electrically isolated)

Quick printout of data on location



```

Smith Ltd.
31.08.1998 11:27:32

Burner

M.05
31.08.1998 11:26:59
cycle 00:00:02
-----
1: °C
01 65.3
02 65.2
03 65.0
04 69.0
05 ↑ 70.5
06 ↑ 71.0
07 69.5
08 67.5
09 63.8

Info:
Limit↑: 70.0 °C
    
```

Non-contact transmission of measurement logs via infrared

Socket 1: quick measurement with type K/T/S probes

Socket 2: highly accurate measurement using Pt100 probe, NTC probe

4 line display

Mains connection and battery recharging in instrument



Displays 2 temperatures or differential temperature

Prints at the touch of a button



Saves up to 3000 readings

Easy operation with cursor

Selects up to 99 locations

HOLD/ MAX values/ MIN values/ Mean calculation



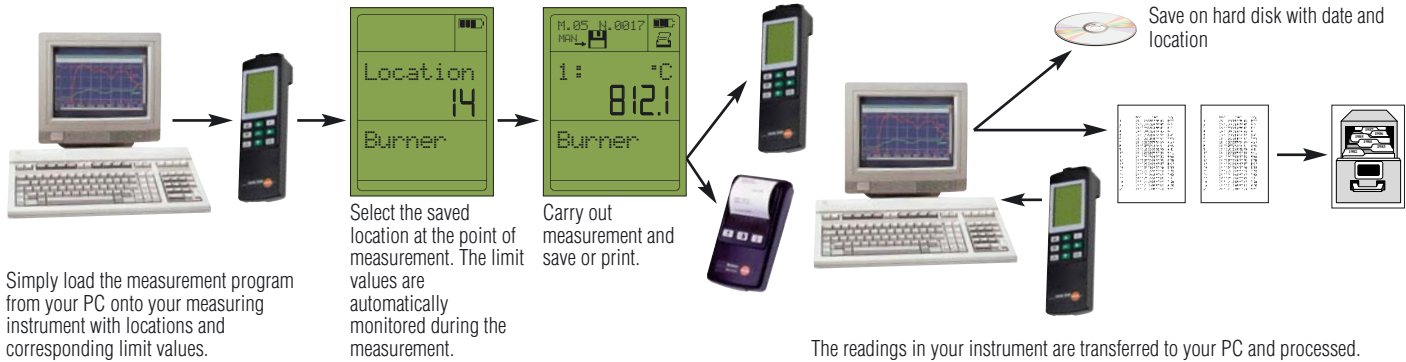
Super-quick and accurate surface probe





Quick and highly accurate temperature measurement with alarm

Easy and reliable completion and documentation of important monitoring measurements



You can order by fax, post or telephone

Simply copy this page, fill out quantities required and return to us by fax or post. Don't forget your name and address.

Qty.	Ordering data for measuring instrument, accessories	Part no.
	testo 945 measuring instrument with TopSafe , 2 channel thermometer (type K/T/S, Pt100, NTC thermocouple), with battery and calibration protocol	0563.9450
	Software	
	ComSoft 3 for data management. Incl. database, analysis and graphics function, data analysis, trend curve	0554.0830
	RS232 cable , connects measuring instrument ↔ PC for data transmission	0409.0178
	Printer	
	Testo log printer , prints data, location, product name with date and time	0554.0545
	testo 575 fast printer , incl. 1 roll of thermal paper and batteries. Infrared thermal line printer with graph function	0554.1775
	Printer paper for Testo log printer (6 rolls)	0554.0569
	Spare thermal paper for printer (6 rolls). Measurement data documentation legible for up to 10 years	0554.0568
	Battery recharger with 4 NC rechargeable batteries for the Testo log printer, batteries are recharged externally	0554.0110
	Additional accessories	
	Plug-in mains unit for mains operation and to recharge battery in instrument	0554.0088
	9 V rechargeable battery , instead of battery	0515.0025
	TopSafe/Case	
	TopSafe protects instrument from dirt, water (IP 65) and impact, dishwasher-proof. With bench stand, belt clip and probe clip for attaching probe to TopSafe.	0516.0442
	Transport case , for safe storage of measuring instrument, TopSafe, probes and Testo log printer	0516.0445

Qty.	Immersion/penetration probes (NiCr-Ni)	Probe tip	Measuring range Accuracy	t ₉₉ s	Connection cable	Part no.
	Robust, water-proof probe 		-60 to +400 °C Class 2	7	1.2 m PVC	0602.1292
	Accurate and quick-action immersion/air probe, water-proof 		-60 to +1000 °C Class 1	2 40 (in air)	1.2 m PVC	0602.0592
	Immersion measuring tip (bendable), can be connected directly to instrument 		-200 to +1000 °C Class 1	5		0602.5792
	Robust, accurate, water-proof food probe made of stainless steel (IP67), resistant to corrosive cleaning substances, oven-proof up to +205 °C (short-term to +250 °C) 		-60 to +400 °C Class 1	5	1.5 m Teflon	0602.3392
	For super-quick measurements in viscoplastic materials (plastic, food...), water-proof 		-60 to +800 °C Class 1	3	1.2 m PVC	0602.2692

Qty.	Immersion/penetration probes (Pt100)	Probe tip	Measuring range Accuracy	t ₉₉ s	Connection cable	Part no.
	Laboratory probe, glass coating, resistant to corrosive substances, glass pipe can be exchanged (probe does not fit inside probe holder) 		-50 to +400 °C Class A	45	1.5 m PUR	0609.7072
	Spare glass for laboratory probe					0554.7072
	Robust, water-proof probe 		-50 to +400 °C Class A	12	1.2 m PVC	0609.1272

In combination with this probe and TopSafe, the testo 945 measuring instrument is water-proof (IP65).



Quick and highly accurate temperature measurement with alarm

You can order by fax, post or telephone

Simply copy this page, fill out quantities required and return by fax or post. Don't forget your name and address

Qty.	Surface probes (NiCr-Ni)	Probe tip	Measuring range Accuracy	t ₉₉ s	Connection cable	Part no.
	Robust, water-proof, with widened measuring tip for flat surfaces 	Ø 6 mm	-60 to +400 °C Class 2	30	1.2 m PVC	0602.1992
	Super-quick and accurate, also suitable for uneven surfaces on account of sprung thermocouple strip 	Ø 10 mm	-60 to +300 °C (short-term to +500 °C) Class 2	<3	1.2 m PVC	0602.0392
	Magnetic probe with adhesive magnets for measurements on metal surfaces Adhesive force: approx. 20 N for higher temperatures, adhesive force: approx. 10 N 	① Ø 20 mm ② Ø 21 mm	-50 to +170 °C -50 to +400 °C Class 2	-	Silicone Fibre-glass with steel plaiting	0602.4792 0602.4892
	Accurate, water-tight, with small measuring head for even surfaces 	Ø 1.5 mm Ø 4 mm	-60 to +1000 °C Class 1	20	1.2 m PVC	0602.0692
	Accurate, water-tight, with small bent measuring head for even surfaces 	Ø 1.5 mm Ø 4 mm	-60 to +1000 °C Class 1	20	1.2 m PVC	0602.0792
	Pipe probe with exchangeable measuring head, for pipe diameter 5 to 65 mm Exchangeable measuring head, can also be used with the 0409.1092 handle 		-60 to +130 °C (short-term to +280 °C) Class 2	5	1.2 m PUR	0602.4592 0602.0092

Qty.	Air probes (NiCr-Ni)	Probe tip	Measuring range Accuracy	t ₉₉ s	Connection cable	Part no.
	Robust, low cost probe 	Ø 4 mm	-60 to +400 °C Class 2	25	1.2 m PVC	0602.1792
	Thermocouples, flexible, can be connected directly to instrument 	Ø 1.5 mm	Class 2 ① -50 to +400 °C ② -50 to +400 °C ③ -50 to +250 °C	5 5 5	Insulation: Fibre-glass Fibre-glass Teflon	0602.0644 0602.0645 0602.0646

Qty.	Surface probes and air probes (Pt100)	Probe tip	Measuring range Accuracy	t ₉₉ s	Connection cable	Part no.
	Robust, water-proof, with widened measuring tip for even surfaces 	Ø 9 mm	-50 to +400 °C Class B	40	1.2 m PVC	0609.1972
	Accurate, robust air probe 	Ø 4 mm	-50 to +400 °C Class A	70	1.2 m PVC	0609.1772

Technical data

Probe connection

Socket 1: Thermocouple probe (type K/T/S)

Socket 2: Pt100 probe, NTC probe

Temperature measurement

Type K (NiCr-Ni)

Measuring range: -200 to +1370 °C
 Resolution: 0.1 °C
 Accuracy of instrument*: ±0.3 °C or ±0.5 % of meas. value at +22 °C (the larger value applies)
 System accuracy**: Up to ±1.8 °C

Pt100

Measuring range: -200 to +800 °C
 Resolution: 0.1 °C
 Accuracy of instrument*: ±0.2 °C or ±0.1 % of meas. value at +22 °C (the larger value applies)
 System accuracy**: Up to ±0.35 °C

Warranty: Meas. instr. 2 years, probe: 1 year

Typical battery lifetimes:

9 V block (zinc carbon): 20 h. The hour times are reduced by a factor of 2 if a 9V rech. battery is used.

*Accuracy: ±1 digit

**System accuracy: total accuracy of probe and measuring instrument.

Order our Testo Catalogue for more information.

Qty.	Calibration certificates	Part no.
	ISO calibration certificate , calibration points -18 °C, 0 °C, +60 °C (air/immersion probes)	0520.0001
	ISO calibration certificate calibration points +60 °C, +120 °C, +180 °C (surface probes)	0520.0071
	DKD calibration certificate , calibration points -20 °C, 0 °C, +60 °C (air/immersion probes)	0520.0211
	DKD calibration certificate , calibration points 0 °C, +100 °C, +200 °C (air/immersion probes)	0520.0221



In combination with this probe and TopSafe, the testo 945 measuring instrument is water-tight (IP65).

Subject to change without notice.

Please send me the following:

- Information on Testo's calibration services
- The Informative Catalogue with a wide range of probes for testo 945

Name _____ Address _____

Company _____

Department _____ Date, Signature _____